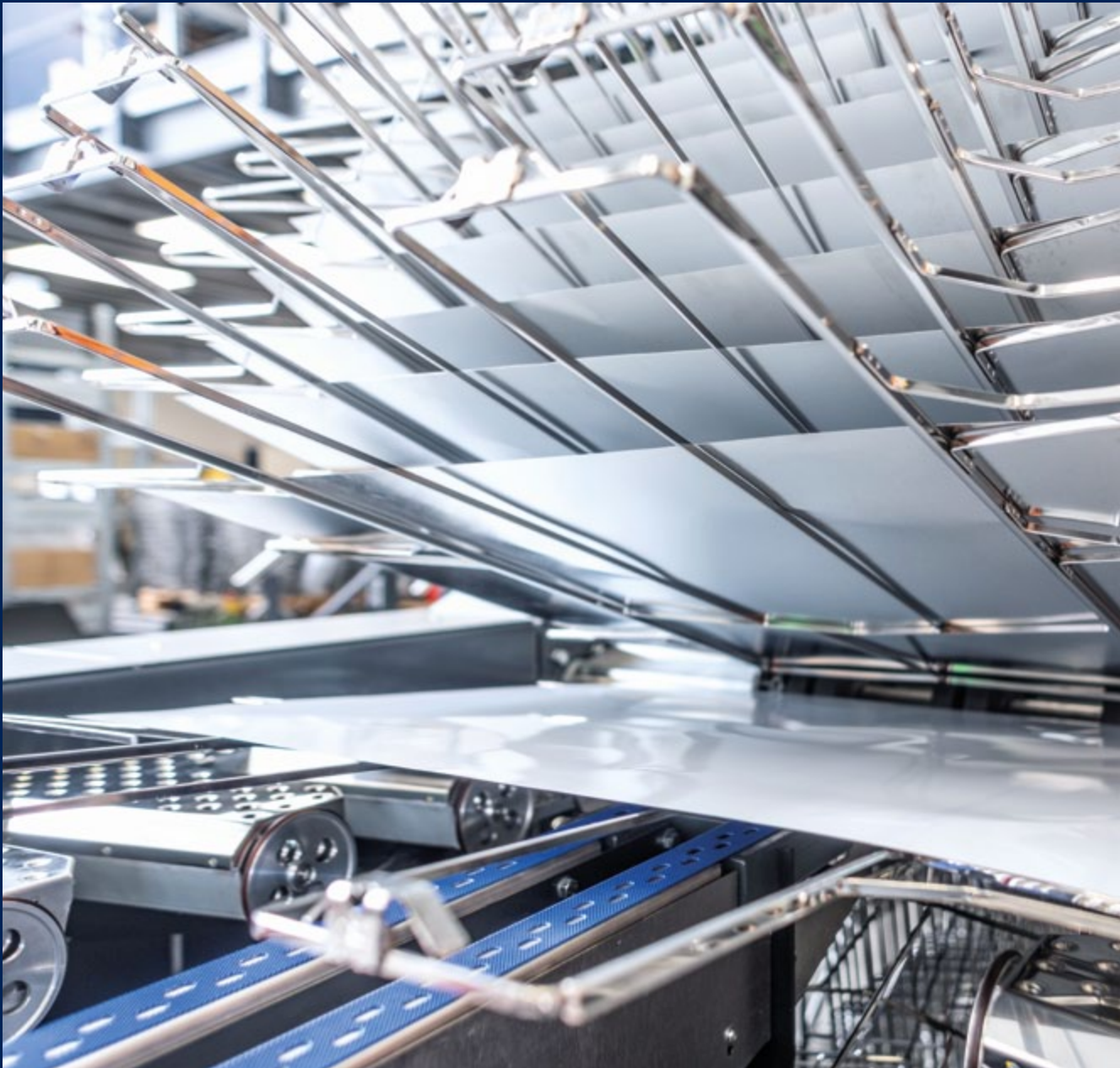


KOENIG & BAUER

Material Handling Systems



we're on it.



Material Handling Systems from Koenig & Bauer

Whether before, during, or directly after the production line for metal decoration, handling metal is a logistical challenge in many respects. Koenig & Bauer's material handling systems were developed to support the core processes of metal decoration with a reliable, efficient, and safe supply of materials.

In doing so, they are not just incidental add-ons, but are fully integrated into the overall production process.

COMPLIANT. SECURE. FUTURE-PROOF.



Every product in this brochure meets the latest EU mandates, ensuring your market access remains seamless beyond 2027:

- **Machinery Regulation (2023/1230):** Guaranteed software integrity to prevent operating bans and eliminate liability traps.
- **CRA & IEC 62443:** "Secure by Design" architecture providing mandatory lifecycle protection and proactive security updates.

Our entire portfolio serves as your strategic shield for NIS2 obligations.

Secure your production with our compliant solutions.

Material Handling Systems from Koenig & Bauer

Best in handling metal pallets and single sheets.

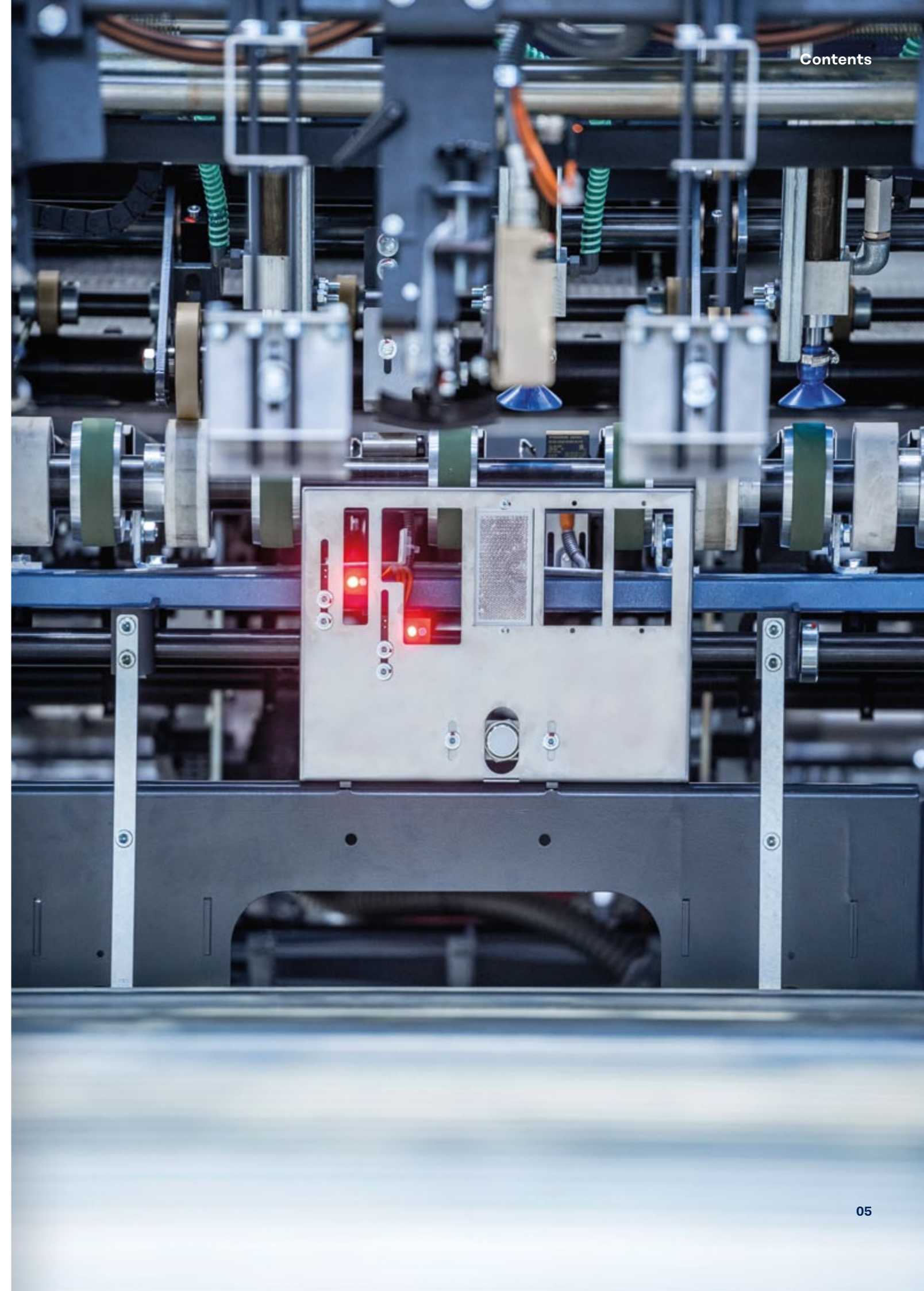
The material handling portfolio can be divided into two subcategories. The pallet handling category includes all systems designed for handling pallets and piles, while the sheet handling systems covers everything related to the handling and transport of individual sheets. What both subcategories have in common is that all the systems are designed for maximum efficiency and automation in the metal decorating process and impress with their reliability, simplicity, and safety.

Pallet handling

- 8/9** Logistics elements
- 10** Pile turner type 823
- 11** Pile turner type 822
- 12** Pallet changer type 775
- 13** Pallet changer type 637

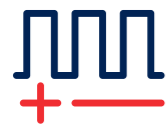
Sheet Handling

- 14/15** Feeder type 781
- 16/17** Transportation bridge
- 18/19** Venturi transport type 843
- 20/21** Transport system type 841
- 22/23** Sheet Management System SMS type 883
- 24/25** Single Sheet Ejection SSE type 887
- 26/27** Loading machine type 811
- 28/29** Unloading machine type 812
- 30/31** Stacker type 808

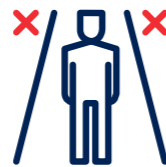


Material Handling Systems from Koenig & Bauer

Your benefits with our material handling.



With modularity as part of the DNA of our latest material handling systems, they can be adapted to fit into almost any production environment



As part of the entire metal decorating process, all material handling systems meet the highest safety standards and fit seamlessly into a coherent overall safety concept



With a wide range of automation options, our material handling systems offer everything you need to support an efficient production process



Full integration into the line control system ensures all material handling systems are easy to operate via the new central HMI, featuring perfect visualisation of all units



Nothing disrupts productivity more than downtime. With reliable material supply and handling, we maximise uptime and ensure that you can rely on your production capacity



Designed to last. Each unit has been developed for the specific requirements of metal decorating – with minimal wear parts and simplified maintenance



Logistics

Fully integrated, modularly expandable logistics element for reliable loading and unloading of pallets on feeder, stacker and pile turners.

Our modular conveyor and turntable solutions offer a seamless path to maximum automation, providing your metal decorating lines with unparalleled flexibility and unrestricted accessibility. By integrating smart-sensor technology, these systems ensure real-time transparency and enhanced safety for your operators, making pallet handling more convenient than ever. Whether you are expanding your current setup or optimising existing workflows, our easily scalable modules guarantee a future-proof logistics environment that prioritises smooth production flow and operational ease.



Roller conveyor

- Accurate, roller-based pallet transport
- Sensor monitoring of pallet position
- Full integration into line control
- Gear driven roller conveyor available for very sensitive pallet movement



Chain conveyor

- Pallet loading or unloading on drive and operator side
- Available for feeder type 781 and stacker type 808
- Full integration into line control



Turntable

- Smooth directional adjustment on roller-based logistics



Customer benefits

- Accurate pallet transport and movement thanks to sensor technology
- Versatile and easily expandable
- Perfect overview thanks to integration into visualisation on HMI
- Best prepared for maximum automation

Optional features

- Modular extension to roller conveyor
- Chain conveyor in different lengths available

Pile Turner Type 823

Robust hardware, synchronised by the line control, guarantees a fast, uninterrupted material flow.

The pile turner type 823 is designed to eliminate bottlenecks. It ensures performant pile turning without ever limiting the output performance of your metal decorating line. Deploy it as a standalone pile turning station or fully integrate it into your logistics track on the feeder type 781 or stacker type 808. When integrated, the system is seamlessly managed by your central line control for automated, high-speed synchronisation. If used for standalone operation, it can handle the output of up to three MetalStar 4 metal decorating lines.



Customer benefits

- Reliable and robust
- Fast and safe turning
- Perfect overview thanks to integration into visualisation on HMI
- Best process integration thanks to both inline or offline installation

Pile Turner Type 822

Reliable turning of the sheet stack.

Our pile turners were developed specifically for use in metal decorating and coating. They handle metal sheets up to a maximum format of 1250 x 1000 mm and stack weights up to 3500 kg, and are thus suitable for all typical applications in the industry. Particular emphasis has been attached to a robust design, so as to guarantee maximum operating reliability and absolutely damage-free turning.

Especially fast turning is the domain of pile turners of type 822. This hydraulic pile turner stands out with a turning time of just 30 seconds and can serve up to seven production lines.



Customer benefits

- Ultimate operating reliability
- Damage-free and fast turning
- Developed specifically for the use in metal decorating

Pallet Changer Type 775

Automatic pallet changes for maximum capacity for coating lines.

If you are looking for maximum capacity on coating lines, our pallet changer type 775 is the right tool for you. The pallet changer reduces the change time down to 30 seconds depending on the installed version.

The reduced change time leads to higher overall efficiency on reduces gas consumption on the thermal oven, as the gap with no sheet present is minimised.



Customer benefits

- Increased OEE and capacity
- Reduced gas consumption due to fewer interruptions in the loading of thermal ovens
- Safe and convenient
- Rotatable fork for maximum operator convenience

Optional features

- Swivel fork for easy removal of empty pallet

Pallet Changer Type 637

Maximum capacity for MetalStar printing lines with automated pallet changes.

The pallet changer type 637 is ideally suited for long job runs with multiple pallets. The automatic change process reduces the non-production time significantly, independent of operator skill or availability. It is specifically designed for MetalStar presses and the automatic height compensation guarantees robust change processes.



Customer benefits

- Increased OEE and capacity
- Safe and convenient

Feeder Type 781

High-performance single sheet feeding.

The single sheet feeder type 781 is the first unit in any MetalCoat or Mailänder and MetJET production line. It was developed for the flawless feeding of metal sheets with straight edges or scroll cuts, whether aluminium or tinplate.

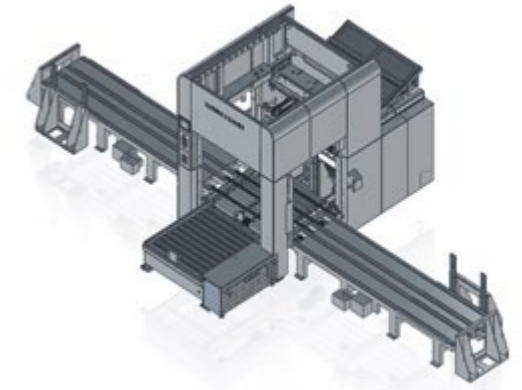
Thanks to its high degree of integration into the overall line control system, its high level of automation and ease of use, it ensures reliable and efficient metal decorating processes.

The variety of additional optional features also provides the opportunity to customise the feeder type 781 to your specific requirements.



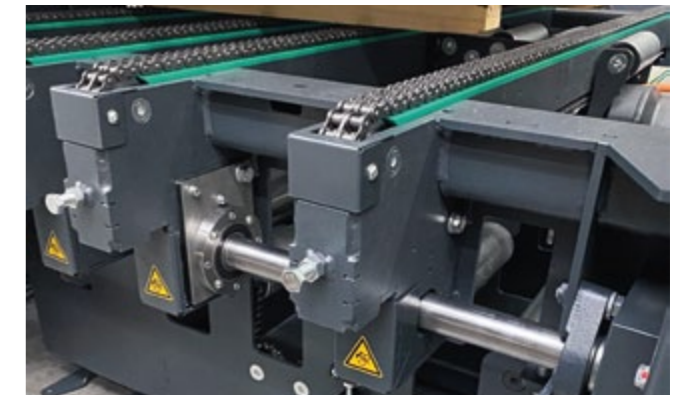
Highlight

- **Logistic integration possible from all three sides**
 - Front with roller conveyor
 - Operator side with chain conveyor
 - Drive side with chain conveyor



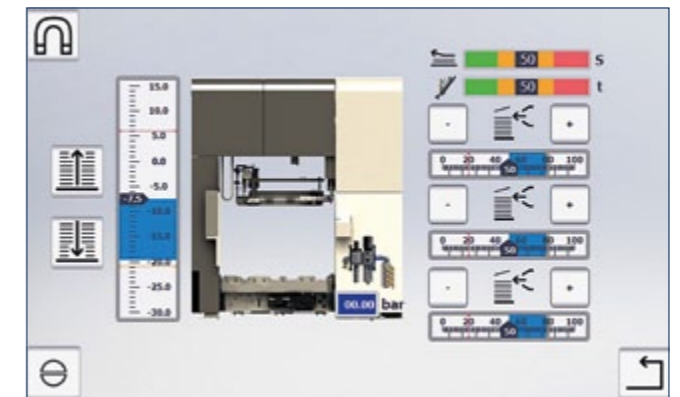
Highlight

- **Stop&Turn possible with all configurations**
 - Rotatable pile table for gentle front edge alignment
 - Less risk for damages on the front edge of the sheet



Highlight

- **Sheet and trend monitoring**
 - Monitoring of sheet arrival at sensor
 - Trend analysis and warning if threshold exceeds
 - Prevention of unstable feeding due to early system warning
 - Early warning of components wear



Customer benefits

- Sustainability and efficiency thanks to demand-oriented operation and energy consumption
- User-friendly operation thanks to intuitive controls and digital visualisation
- Trouble-free production thanks to optimised, air-assisted sheet separation
- Fast pile changes thanks to enhanced automation
- Excellent accessibility due to optional extension of automated logistics

Optional features

- Pile lift with roller conveyor
- Pile lift with roller conveyor, chain conveyor and Stop&Turn
- Preparation for aluminum sheets
- Preparation for scroll sheets
- Feeder logistics automation

Transportation Bridge

Interface between MetalCoat and thermal dryer.

The transport bridge serves as an important interface between the MetalCoat and the oven's loading machine. This essential component is more than just a transport segment: it was designed to optimise coating application and ensure quality control.

It provides the necessary flow time, enabling optimal coating application and perfect surface finish before the wet sheet enters the oven. Transport via round belts creates the ideal base for this.

In addition, the transport bridge provides an optimal platform for important inspection systems that enable high-precision quality control immediately after the coating has been applied (e.g. SpecMetrix). It also provides the necessary mounting base for advanced sheet removal systems such as the SSE 887, ensuring safe and reliable removal of the sheets before they enter the oven.



Highlight

- **Industry proven round belt transport**
 - Front with roller conveyor
 - Safe conveyance of tinplate using round belts
 - Small contact surfaces between the round belt and the sheet
 - Tool-free format change via moving the belts, preventing the side edges of the sheet from contacting the belts



Highlight

- **Integration of Single Sheet Ejection type 887**
 - Possibility for integration of single sheet ejection
 - Safe removal of sheets before loading machine



Customer benefits

- Flow-out for optimised coating application
- Perfect base for Single Sheet Ejection type 887 and SpecMetrix
- Round belts for low risk of contamination on the rear side

Venturi Transport Type 843

Air cushion-guided sheet transport.

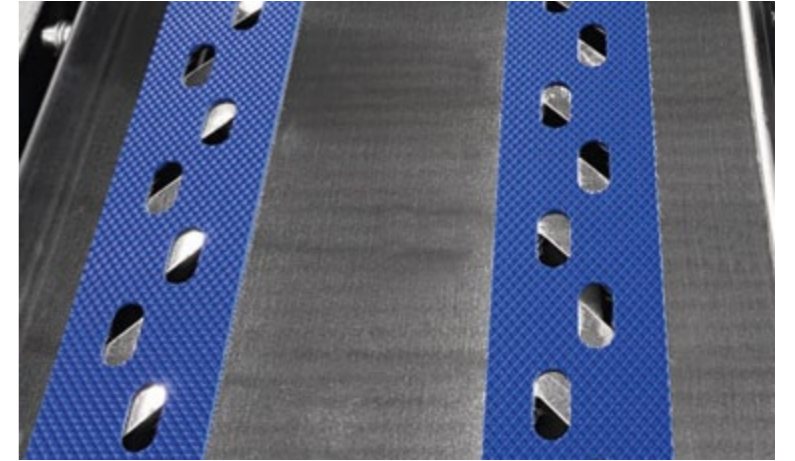
The innovative Venturi transport system type 843 impresses with its smooth and precise sheet movement. Only two narrow vacuum belts, positioned in the centre of the conveyor, are in contact with the sheets and ensure precise movement.

The result: slip-free, stable transport even of all-over coated, wet sheets is possible at the highest production speeds without any hassle. This is not only advantageous for wet-coated sheets – thin materials and scroll sheets can also be handled more reliably without major changeover measures due to format changes.



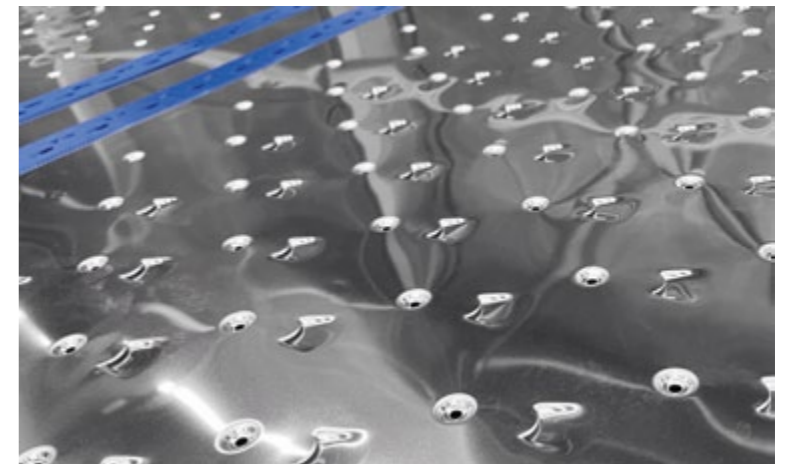
Highlight

- **Two narrow vacuum belts for precise sheet travel**
 - Small contact patch
 - Precise timing due to vacuum



Highlight

- **Venturi table**
 - Independent of format due to distribution of air cushion along the whole width
 - Adjustable air cushion
 - Stainless steel and flat surface for easy cleaning



Highlight

- **Integration of Single Sheet Ejection type 887**
 - Possibility for integration of single sheet ejection
 - Safe removal of sheets before loading machine



Customer benefits

- Extremely reliable and precise sheet transport
- Less scratches thanks to low-contact air cushion
- No adaptations to sheet size necessary
- Low maintenance effort
- Less wear parts

Transport System Type 841

Modular wide belt conveyor system.

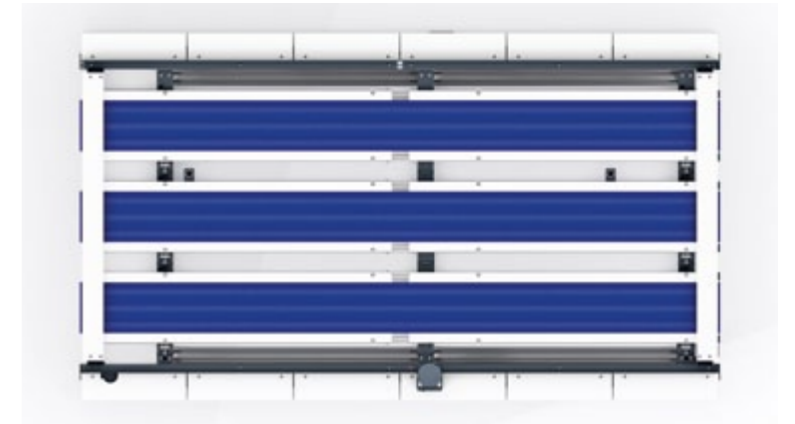
Wide belt conveyor systems are versatile and must perform a wide variety of functions. Sometimes they are used as simple transition or buffer zones, sometimes as a basis for inspection systems or MetalCure LED drying systems.

The type 843 transport system was developed with the objective of meeting this wide range of requirements. The result is a modular transport system that remains what it has always been – a wide belt transport system – but improved and enhanced with small but essential new features such as single spooling per belt, continuous sheet position monitoring and a new design with floor-level coverings. It is available in 1500 and 3000 mm length.



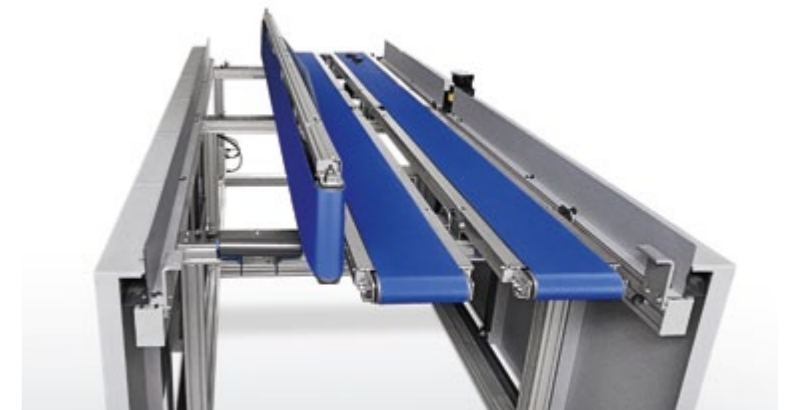
Highlight

- **Sensor-monitored sheet travel**
 - Sheet arrival sensors on infeed and outfeed of the transport
 - Continuous monitoring of sheet travel for maximum operation security



Highlight

- **Easy belt exchange**
 - Flipable belt segment for easiest exchange of belts in case of wear
 - No need for belt welding inside of the line



Highlight

- **Different variants available for different applications**
 - 3 m or 1.5 m length
 - For installation of MetalCure LED dryer
 - For installation of inspection systems



Customer benefits

- Reliable, format-independent transport
- Optimum product safety thanks to FDA-compliant belts
- Continuous production control thanks to sensor-based sheet monitoring
- Modularity enables multiple use-cases
- Preparation for ISRA Vision DecoStar system

Sheet Management System SMS Type 883

Safe and reliable sheet ejection, re-infeed and waste stacking.

The Sheet Management System 883 series is engineered to deliver peak reliability and operational safety for your production line. Featuring advanced sensor-controlled ejection, the system guarantees the precise removal of test sheets at any production speed, regardless of sheet format or weight. For maximum convenience, sheets are delivered to a secured output tray for easy, ergonomic access by the operator.

Designed with a modular philosophy, the 883 series adapts seamlessly to your specific requirements. Boost your productivity with the optional sheet infeed function, which automatically returns sheets to the production flow at the perfect moment. To further minimise manual tasks, the integrated waste box allows for the pre-programmed ejection of start-up sheets, switching to “good” production automatically without operator intervention.



Base function

- **Sheet ejection**
 - Single sheet ejection
 - Sensor-monitored for precise timing and safe ejection



Option

- **Sheet re-infeed**
 - Automatic re-infeed into sheet gap during production



Option

- **Waste box**
 - Waste box for automatic rejection of defective sheets
 - For rejection of start-up waste
 - For rejection of defective sheet detected by a camera system



Customer benefits

- Maximum operational safety
- High process reliability thanks to sensor monitoring
- Reliable ejection and infeed
- Programmable automatic mode

Optional features

- Sheet re-infeed
- Sheet stacking into waste box

Single Sheet Ejection SSE Type 887

Easiest and safest single-sheet ejection.

The Single Sheet Ejection (SSE) type 887 is an essential unit for fast and reliable sheet ejection in your coating or printing line.

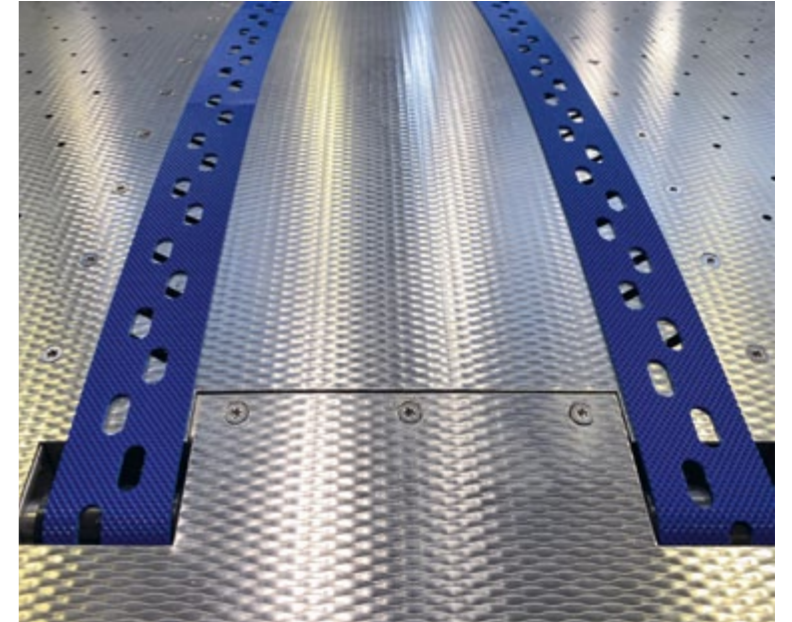
The SSE 887 enables the precise ejection of single sheets without adding length to the line and can be installed on an existing conveyor system. This makes it one of the most user-friendly and smartest sheet management systems in the field of metal decorating. The ejection mechanism is designed to ensure minimal contact with the sheets, resulting in format-independent and damage-free ejection – regardless of the sheet type and speed.

The ejected sheets can be quickly inspected and, if necessary, safely and seamlessly reinserted thanks to the optional “Single Sheet Insertion” upgrade. The unit is fully compatible with other common quality management systems such as Langhans and Specmetrix.



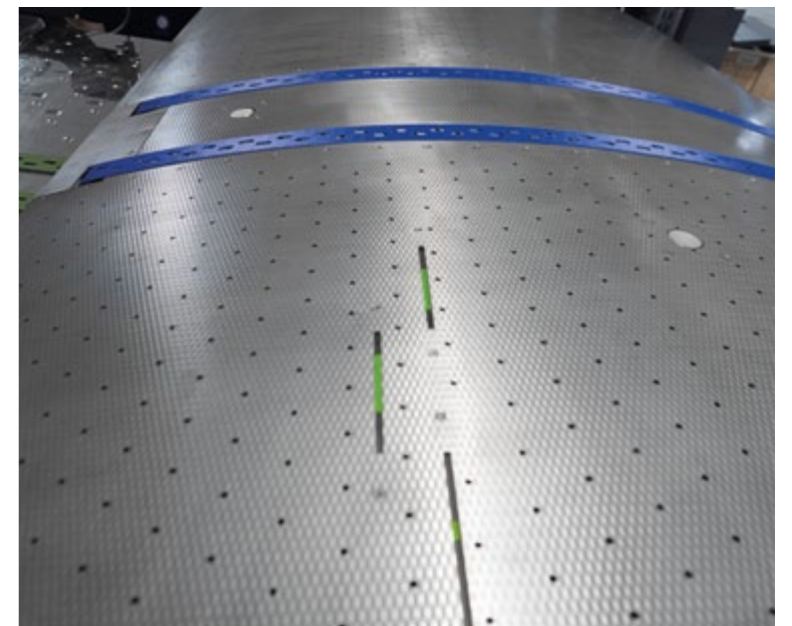
Highlight

- **Two narrow vacuum belts for precise sheet travel and Venturi air cushion**
 - Precise timing due to vacuum
 - Safe sheet positioning and acceleration
 - Independent of format due to distribution of air cushion along the whole width



Highlight

- **Side position indicator**
 - Light indication for side alignment for re-infeed
 - No mechanical adjustment necessary



Customer benefits

- Fast and easy sheet ejection
- Safety scanners combine maximum security with optimum accessibility
- Low-contact process for damage-free ejection
- No effort required for changeover thanks to format independence
- Low maintenance effort

Optional features

- Single sheet re-infeed

Loading Machine Type 811

Safe and sensor-monitored loading of the thermal dryer.

Automated control of the dynamic sheet brake now enhances the type 811, using sensor-based position detection to initiate a complete stop. By eliminating manual intervention, the system ensures consistent accuracy and a setup process that is entirely independent of operator experience.

A secure working environment is maintained by integrated safety scanners, while the local operator panel provides a clear and intuitive interface. This technical synergy ensures a reliable, high-precision start to the production cycle.



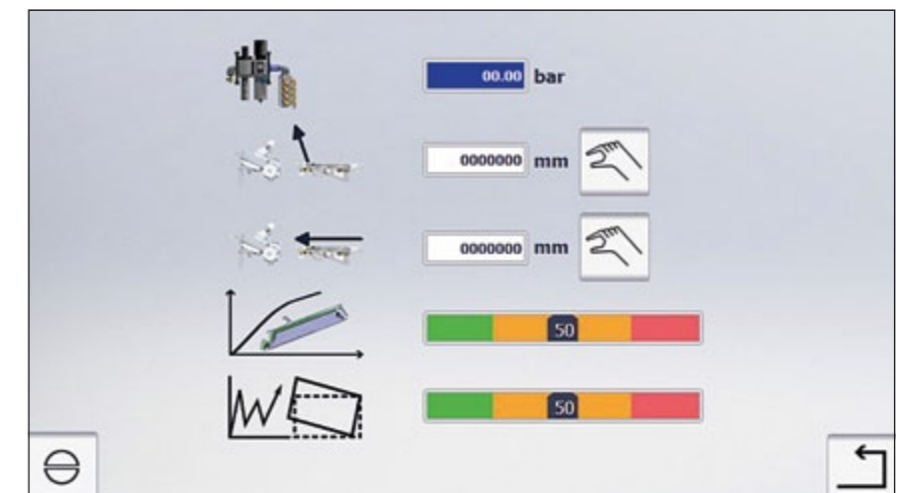
Highlight

- **Easy machine operation**
 - Clear and structured HMI for all relevant machine functions
 - Big pictures for easy usage
 - Different operator levels with different information depth
 - Simple machine operation
 - Easy to understand



Highlight

- **Sheet and trend monitoring**
 - Monitoring of sheet rotation and position during production
 - Trend analysis and warning if threshold exceeds
 - Crash prevention due to early system warning
 - Early warning of components wear



Customer benefits

- Lower crash risk with automatic brake point adjustment
- Safety scanners combine maximum security with optimum accessibility
- Transport consistency assured by Venturi and belt variants

Optional features

- Venturi sheet guiding system for loading machine

Unloading Machine Type 812

Unloading on a new level.

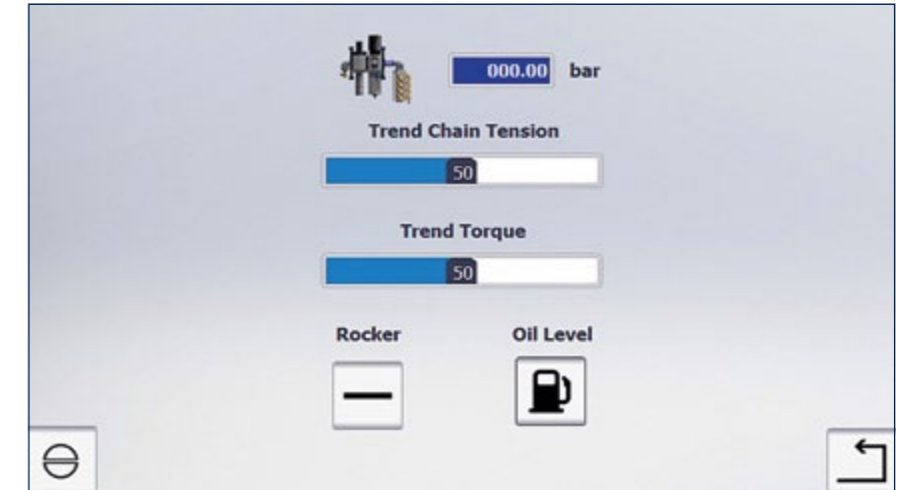
Smooth material discharge is achieved through the automatic sheet accelerator, which triggers immediately upon sensor-driven sheet recognition. This intelligent sequence minimises idle times between cycles, leading to a significant measurable increase in overall machine uptime.

Protection for the operator is provided by state-of-the-art safety scanning of the entire workspace. The system is managed via a dedicated local panel, creating a seamless and efficient output stage that prioritises both high performance and maximum safety.



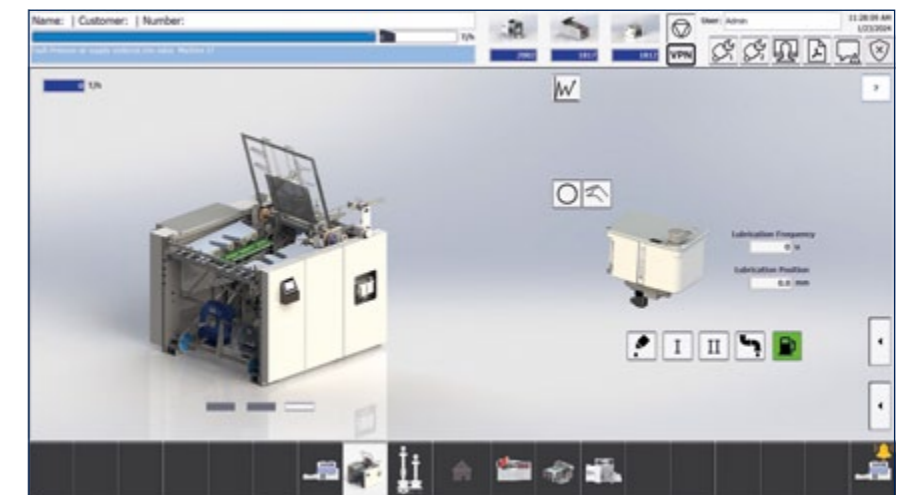
Highlight

- **Chain tension and torque monitoring**
 - Continuous monitoring of oven chain tension and torque
 - Automatic warning if thresholds are exceeded
 - Early warning of components wear
 - More uptime with preventive maintenance



Highlight

- **Lubrication setting**
 - Access to lubrication setting for oven chain
 - Easy and convenient setting of lubrication



Customer benefits

- High uptime due to sensor-monitored sheet acceleration
- Safe operation with state-of-the-art safety equipment
- Easy and convenient operation with local operator panel

Optional features

- Venturi sheet guiding system for unloading machine

Modular Stacker Type 808

Fully modular stacking solution for high-performance metal decorating lines.

The modular stacker type 808 is the last unit in any Koenig & Bauer MetalPrint metal decorating production line. It was developed for scratch-free and accurate stacking of metal sheets.

But it's not only the end of the line, it is also another central touchpoint for the operator: with a large HMI, all units on the line can be accessed centrally from here. At the same time, the operator has everything in view. This ensures that everything runs smoothly right up to the end.

In addition to the modular expansion with several boxes, there are also numerous other options available for stacking, which make stacking type 808 the most suitable for you.



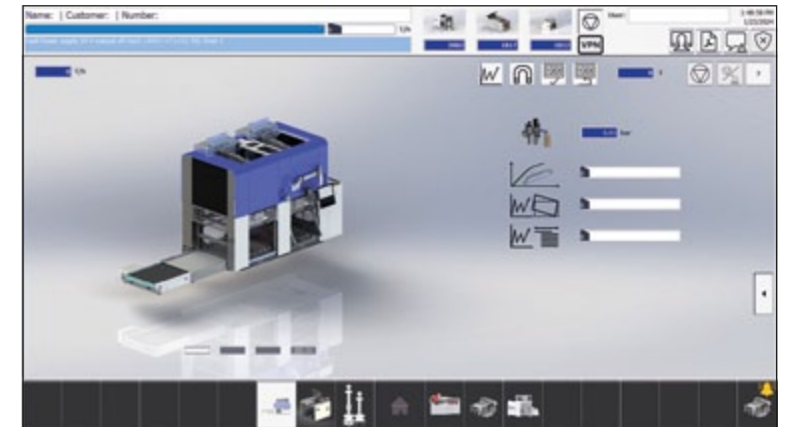
Highlight

- **Convenient box setting**
 - All settings for each box can be adjusted from the HMI
 - Big and clear to understand pictures
 - Simple machine operation
 - Easy to understand HMI



Highlight

- **Sheet and trend monitoring**
 - Monitoring of sheet rotation and position during production
 - Trend analysis and warning if threshold exceeds
 - Crash prevention due to early system warning
 - Early warning of components wear



Highlight

- **Logistics control**
 - All logistic modules can be operated from main HMI
 - All logistic modules are visible on the screen with status
 - Easy and convenient control of logistic
 - Central point of logistic control



Customer benefits

- Sustainability and efficiency thanks to demand-oriented operation and energy consumption
- Maximum control over every line unit thanks to a clear HMI
- Modularity allows free box selection for waste separation and non-stop operation
- Reduced downtime thanks to trend analysis
- Excellent accessibility due to optional extension of automated logistics

Optional features

- Modular extension of stacker box for up to five stacking boxes
- Gear-driven modular roller conveyor especially for slippery materials
- Operator side switch

Koenig & Bauer MetalPrint GmbH

Wernerstr. 119-129
70435 Stuttgart, Germany

T +49 711 699 71-0
F +49 711 699 71-670
info-metalprint@koenig-bauer.com

metalprint.koenig-bauer.com



www.tuvsud.com/ms-zert

Any part of the text or images may only be used with the permission of Koenig & Bauer MetalPrint GmbH. Images may depict special configurations that are not included in the basic price. The manufacturer reserves the right to make technical changes and modifications to the construction. Actual product appearance may vary from illustrations due to technical developments or printing processes.

Errors and omissions excepted.

601-58-en 04/2026
Printed in Germany