

KOENIG & BAUER

MetalCoat 484



we're on it.

Smart Automation. High Quality. Maximum Productivity.

Excellence in motion: proven reliability meets next-gen innovation with automated washing and closed-loop coating thickness control.

The MetalCoat 484 sets a new benchmark in metal decorating. Designed as a high-performance coating machine for metal sheets, it combines maximum automation with market-leading efficiency. At its core is a state-of-the-art three-roller application system featuring direct drives.

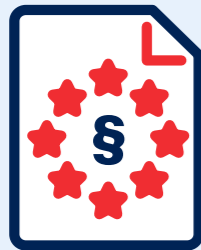
All parameters are intuitively managed via the central HMI. By storing electrical settings for repeat jobs, the machine significantly reduces setup times and manual interventions. Innovative features, such as the optional closed-loop coating thickness control, noticeably reduce operator workload, minimise lacquer consumption,

and guarantee consistent quality throughout the entire production run.

Productivity remains the focus during cleaning as well: an automated washing system significantly reduces tedious manual tasks and accelerates the changeover process.

Whether processing solvent-based or UV/UV-LED coatings, the MetalCoat 484 delivers exceptional speed and a premium finish. Thanks to the centralised control, operators maintain full command over all line components – whether integrated into a complete coating line or used as an inline solution following a printing press.

COMPLIANT. SECURE. FUTURE-PROOF.



Every product in this brochure meets the latest EU mandates, ensuring your market access remains seamless beyond 2027:

- **Machinery Regulation (2023/1230):** Guaranteed software integrity to prevent operating bans and eliminate liability traps.
- **CRA & IEC 62443:** "Secure by Design" architecture providing mandatory lifecycle protection and proactive security updates.

Our entire portfolio serves as your strategic shield for NIS2 obligations.

Secure your production with our compliant solutions.



MetalCoat 484 – Unmatched Performance for Perfect Coating

Equipped with state-of-the-art technology, the MetalCoat 484 boosts productivity and availability while minimising production costs.



Increase productivity with fast line setting via stored job data management and intuitive, quick operation using central touch panels



Automated washing function for the coating unit increases uptime and reduces operator interaction



Reduced energy consumption across the entire coating line by demand-controlled consumers



Automatic closed-loop coating thickness control ensures consistent coating thickness while minimising consumption



Motorised coating thickness adjustment via HMI. Fine-tune delta settings to reduce contamination and optimise difficult lacquer applications



Low-energy HighEcon oven featuring integrated air purification for minimal gas consumption and a demand-controlled cooling zone



Product Application

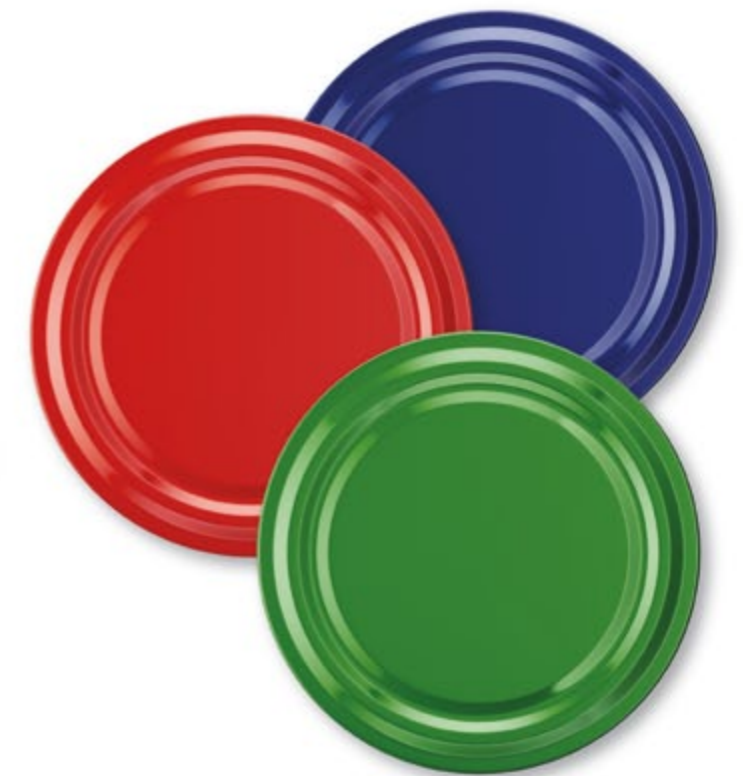
Koenig & Bauer MetalPrint's expertise guarantees the highest performance and robust design for all high-quality metal packaging applications.

Equipped with a wide range of packages for straight or scroll cut, tin plate or aluminium sheets, the MetalCoat 484 meets all the requirements of the most demanding packaging applications.

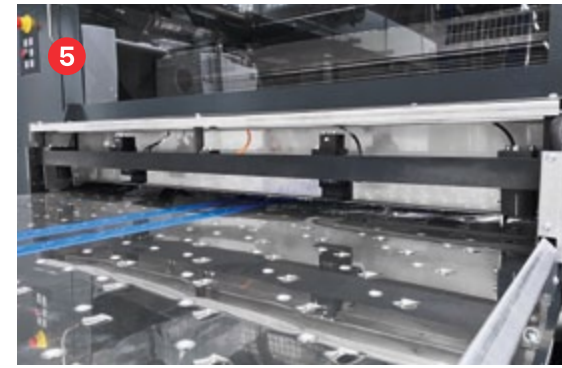
Its flexibility allows for the efficient processing of all common coating types for internal, external, and protective coating, covering a broad spectrum of customer applications, such as:

- Food cans
- Technical cans
- Fancy cans
- Barrels
- Crown caps
- Twist-off caps
- Wine closures
- and many more

The ability to customise the coating line for specific applications ensures that a wide variety of products can be manufactured with maximum cost efficiency.



MetalCoat 484



Option: Inline sheet position control

- Identifies skewed sheets plus lateral and longitudinal offset
- Sensors integrated within the coating machine delivery area
- Intuitive operation via the line control HMI, no additional control panel required
- Minimises waste by detecting misregistered sheets early
- Enables customised ejection of defective sheets
- Supports seamless data transfer



Round belt delivery

- Safe conveyance of sheets using round belts
- Small contact surfaces between the round belt and the sheet
- Fast format adjustments
- Low cleaning requirements
- Pneumatically supported lifting and lowering



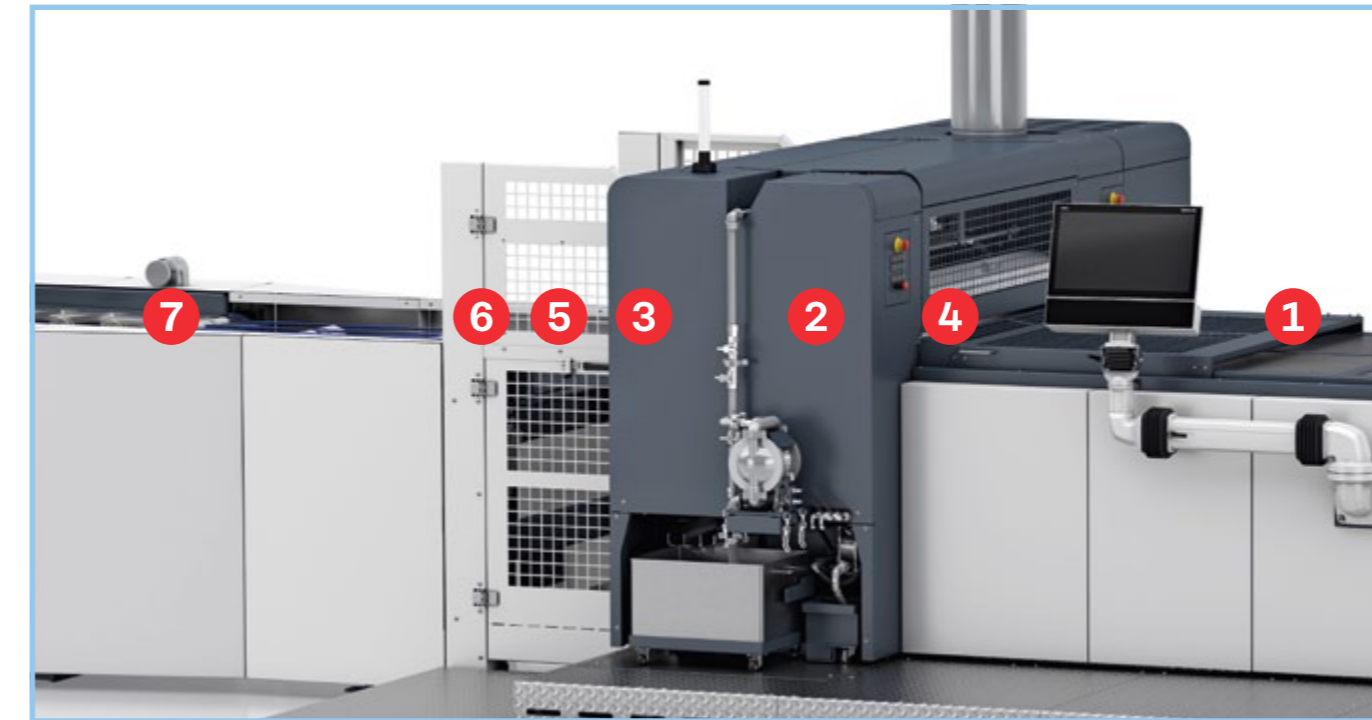
Option: Inline coating thickness control

- Non-contact coating thickness measurement with established Specmetrix® equipment
- Real-time data transfer of measured values
- Adaptive nip control for film weight synchronisation via intelligent software
- Significant coating savings by maintaining optimal target ranges
- Reduced operator dependency
- Faster setup due to automated correction



Thermal dryer with integrated air purification

- Cost-effective with low gas consumption with the HighEcon air purification system
- Uniform temperature distribution in the heating zone with AirFlow Pro with specially designed baffles
- Temperature control for prevention of tin flow
- Effective exhaust air cabin
- High-performance cooling zone with setpoint temperature control



VacuMatic infeed table and gripper drum

- Perfect register thanks to vacuum belts and precise stops
- Electronic format settings
- Demand-oriented settings according to sheet weight
- Storable settings for repeat or similar jobs
- Exact sheet transfer to coating unit



Reliable high-performance coating

- Excellent coating results via precise three-roller technology
- Direct drive technology for coating rollers
- Automatic detection of the coating cylinder diameter
- Speed and pressure settings for all rollers adjustable via touchscreen
- Memory function for fast setup of repeat or similar jobs
- Effective extraction of solvent-laden air



Fast make-ready – easy operation

- Rapid cylinder changes via integrated lifting device and rail roll-out
- Laser-assisted zero setting for high-precision spot coating and reduced waste
- Quick-fit-kit for external part cleaning and faster coating changes
- Quick-release varnish pump on a platform for easy access and removal



Automated roller washing system

- First automated washing system for three-roller coating units
- Automated washing of all rollers via advanced Direct Drive technology
- Automatic solvent supply
- Reduces washing times by up to 50 percent for faster job changes
- Consistent, minimal solvent consumption through predefined washing programs
- Increases productivity by allowing parallel make-ready tasks

Logistics

- Roller conveyors for pile transport
- Gear driven roller conveyors for pile moving of slippery metal sheets
- Chain conveyor for side loading and unloading of piles for feeder or stacker
- Turntable for the safe rotation of piles



Stacker

- Single stacking
- Double stacking for uninterrupted production or separation of waste sheets
- Triple stacks for uninterrupted production and separation of waste sheets
- Available as magnetic overhead (MagStack) or vacuum overhead version (VacStack)



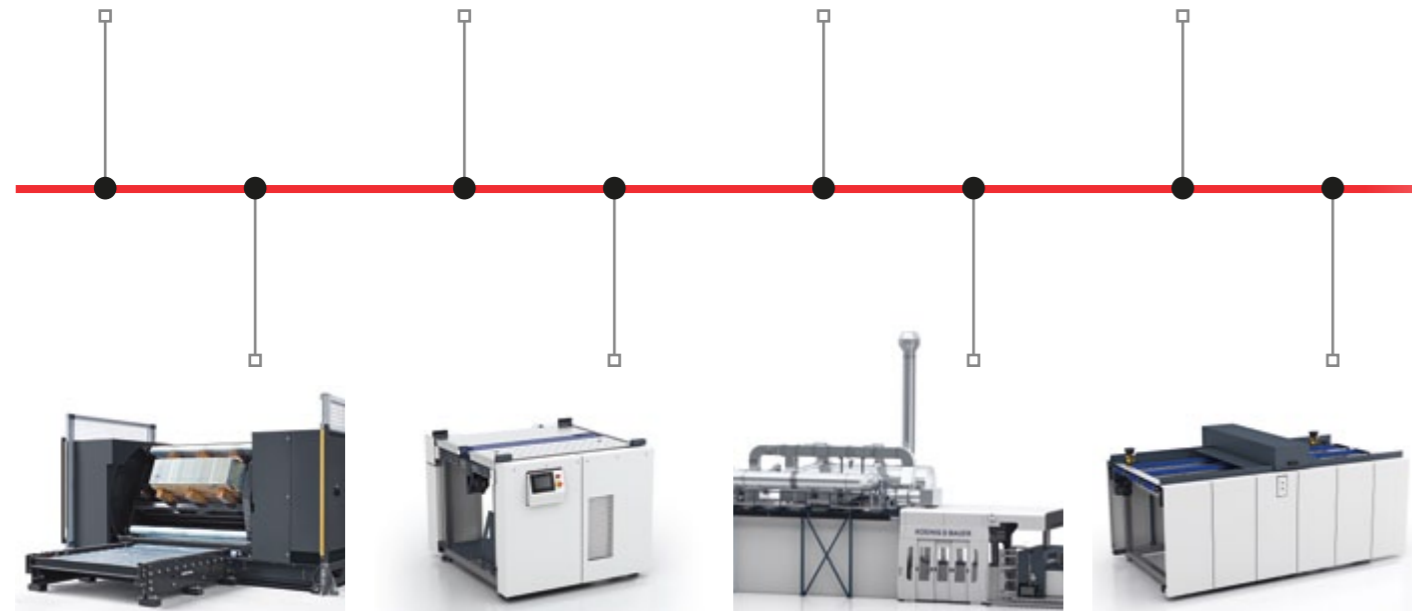
MetalCoat configurations

- 3-roller or anilox coating unit
- Free-standing single coater
- Inline coating after press
- Tandem coating line: applying internal and external coatings in one pass
- Double coating line: applying two internal coatings in one pass



Single Sheet Ejection

- Flexible mounting on round belt, Venturi, or wide belt conveyors
- Secure sheet removal
- Re-infeed available
- Format-independent Venturi design



Pile turner

- Inline pile turner for safe and automatic turning of piles



Conveyor

- Round belt: minimised contact points to reduce contamination risk
- Venturi system: precision vacuum transfer with air cushion support
- Wide belt: stable transport following back-side drying



Thermal dryer

- Gas-saving HighEcon dryer with integrated air purification
- Direct heated dryer (no integrated air purification)
- Customised pre-dryer for tandem coating lines
- Fuel options: Natural gas, LPG, or hydrogen



UV/UV-LED dryer

- MetalCure UV: established high-power curing solution
- MetalCure LED: energy-efficient curing solution
- Final dryer integrated on conveyor
- Backside dryer installed downstream of the coating machine



A Matching Line for Every Application

As individual as your production. The MetalCoat 484 is suitable for a broad spectrum of products and applications. Tailored precisely to your requirements.



Technical Data

Sheet properties				
Maximum	1000 x 1200	mm	39.37 x 47.24	inch
Minimum	510 x 710	mm	20.08 x 27.95	inch
Thickness	0.12 – 0.50 for tinplate	mm	0.0047 – 0.0197 for tinplate	inch
	0.20 – 0.50 for aluminium	mm	0.0079 – 0.0197 for aluminium	inch
Weight	0.5 – 2.6	kg	1.102 – 5.732	lbs
Sheet material				
Tinplate and ECCS (TFS) complying with EN 10202 Aluminium complying with EN 541				
Sheet cut				
Straight Scroll				
Production speed ¹				
up to 8000 sheets/h				
Coating thickness				
3-roller coating unit	5 – 35	g/m ²	0.1475 – 1.0323	oz/yd ²
Anilox coating unit	3 – 10	g/m ²	0.0885 – 0.2949	oz/yd ²
Coating types				
Solvent-based lacquers, UV or UV-LED coatings				

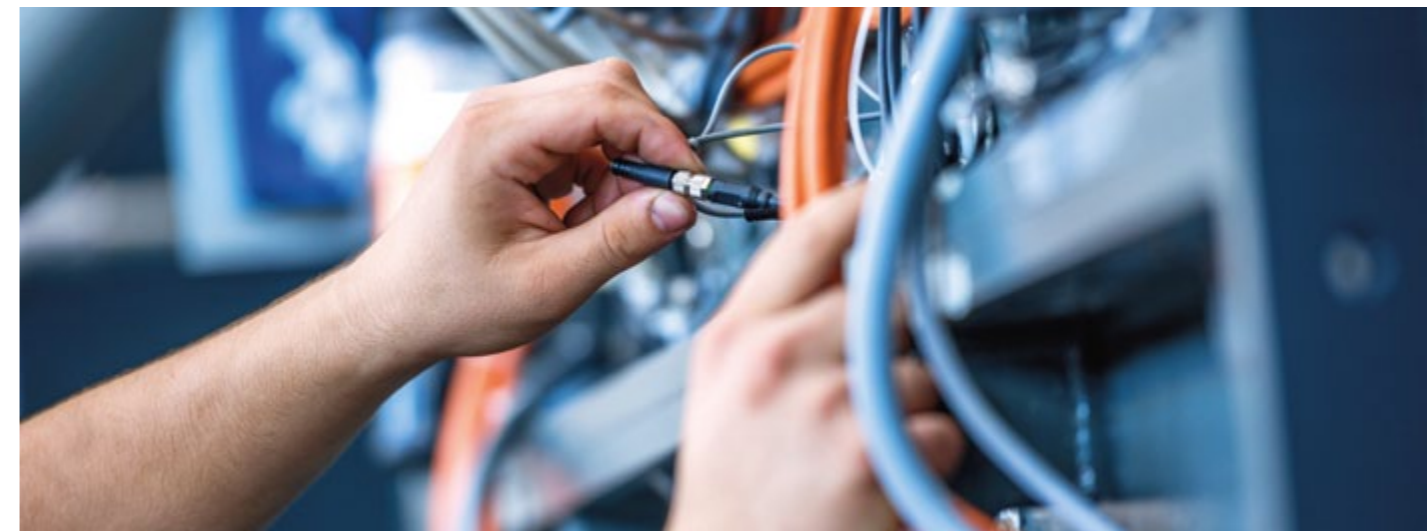
¹ Depending on quality, format and thickness of sheets, coatings, and the specifications of the thermal dryer.

Achievement of the listed capabilities may be subject to optional equipment.

Professional Services for Your Koenig & Bauer MetalPrint Products

We are at your service! Our experts provide assistance and support to your production lines. All over the world and over the full service life.

<p>Time & productivity gains</p> <p>24/7 Support</p>	<p>Only original</p> <p>Spare Parts</p>	<p>Tailored partnership</p> <p>Service Contracts</p>
<p>Stay up-to-date</p> <p>Upgrades</p>	<p>Preventing unplanned downtime</p> <p>Preventive Maintenance</p>	<p>Optimised production</p> <p>Training & Consulting</p>



Koenig & Bauer MetalPrint GmbH

Wernerstr. 119-129
70435 Stuttgart, Germany

T +49 711 699 71-0
F +49 711 699 71-670
info-metalprint@koenig-bauer.com

metalprint.koenig-bauer.com



www.tuvsud.com/ms-zert

Any part of the text or images may only be used with the permission of Koenig & Bauer MetalPrint GmbH. Images may depict special configurations that are not included in the basic price of the machine. The manufacturer reserves the right to make technical changes and modifications to the construction. Actual product appearance may vary from illustrations due to technical developments or printing processes.

Errors and omissions excepted.

601-91-en 04/2026
Printed in Germany