

KOENIG & BAUER

Mailänder 283



we're on it.

Proven Technology, Born in Metal Decorating

Since 1888, the name “Mailänder” has stood for reliability and solid construction, especially when printing metal sheets.

The Mailänder 283 continues the success story of the Mailänder series and embodies all the characteristics that have made the brand name “Mailänder” so wellknown.

Thanks to its shared technology platform, the Mailänder 283 includes many MetalStar 4 solutions, so you can be sure that your machine utilises the latest technologies that are often missing on other metal decorating machines. Whether a modern multi-roller system,

application-orientated washing systems or state-of-the-art control station technology – many details make the operator’s work easier.

Like all previous Mailänder metal decorating presses, the Mailänder 283 has a modular design so that it can be easily adapted or modified. It can be supplied with UV, UV LED or thermal drying systems as well as various options for inline coating solutions.

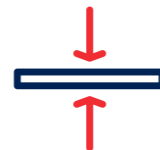


Mailänder – Always a Good Choice

The Mailänder 283 is specially tailored to the needs of modern metal decorating production and offers unique advantages.



Highest output with speeds of up to 7,500 sheets/hour thanks to material-specific configuration and high automation



Optimum processing of all types of sheet metal thanks to special upgrade packages for thin material, scroll sheets and aluminium sheets



Outstanding print quality thanks to market-leading offset printing technology



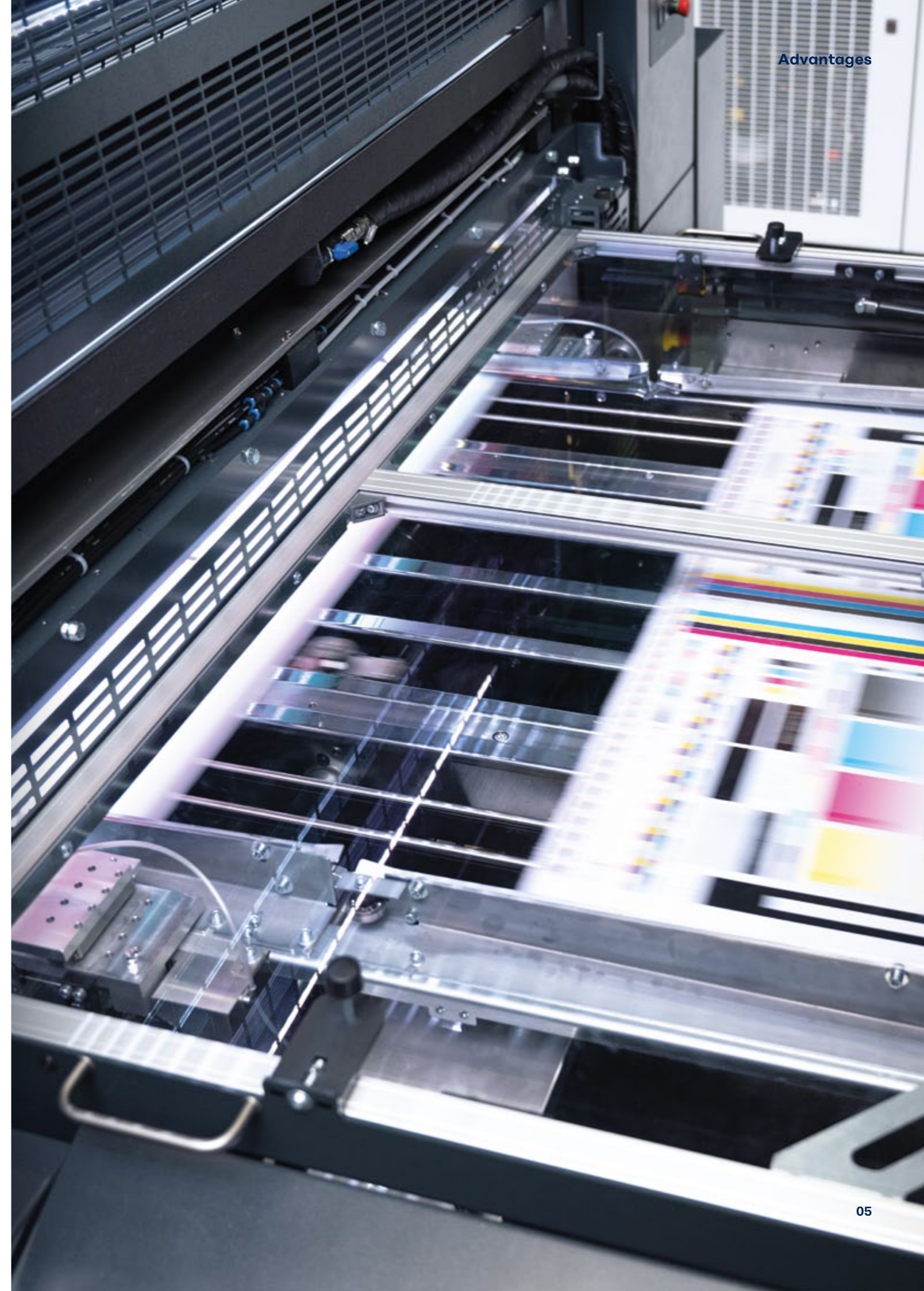
Energy-efficient line configuration with UV, UV LED or conventional drying, depending on your requirements



Maximum flexibility in terms of configurations and equipment options – perfectly tailored to your individual requirements



Easiest operation thanks to simple machine design and intuitive HMI



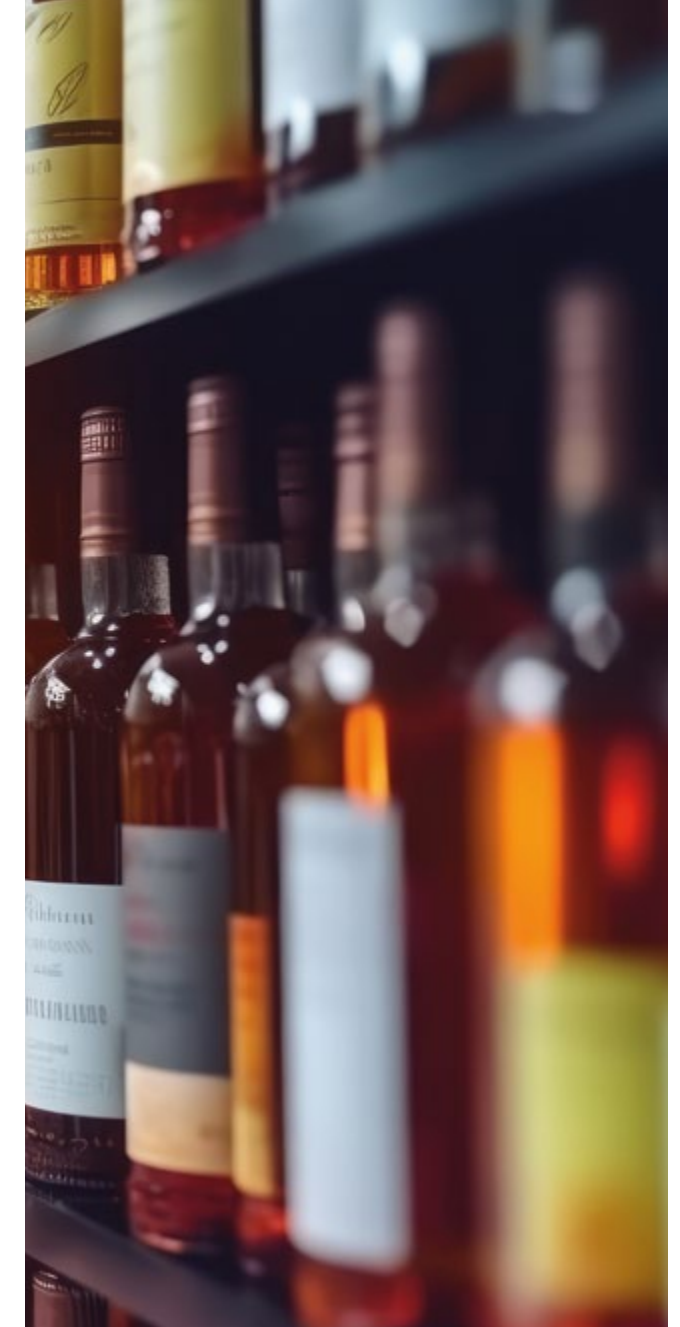
Product Application

Koenig & Bauer's cutting-edge, in-depth expertise in metal decorating guarantees the highest print quality combined with a robust and reliable design. It is therefore ideally equipped for all high-quality applications in the metal packaging market for food and non-food packaging.

With a wide range of equipment packages for thick sheet, thin sheet, aluminium or scroll sheets, the Mailänder 283 meets all the requirements of the most demanding packaging applications. It is therefore able to process a wide range of customer applications, such as

- Food cans
- Technical cans
- Fancy cans
- Barrels
- Crown caps
- Twist-off caps
- Wine closures
- and many more

The ability to customise the Mailänder 283 for specific applications enables a wide variety of products to be manufactured with maximum cost efficiency.



Mailänder 283



CleanTronic – Blanket washing

- Automatic washing of the blanket
- Blanket washing possible in parallel in all printing units
- Simple removal of the washing spindle
- Convenient to operate from the control console
- Reduced washing time thanks to thorough and automatic blanket cleaning



MetalCure LED dryer

- State-of-the-art UV LED technology for drying as an intermediate or final dryer
- Format-dependent switch-off of unused UV LED segments
- No heat input into the metal sheet
- No heating or cooling necessary
- Energy savings of up to 80% compared to conventional UV drying



Control console

- Simple operation of the printing press from the control console
- Integrated LED lighting
- Automatic register setting with ErgoTronic ACR at the touch of a button
- Control of all production and washing programmes
- Easy handling and fast learning curve



Sheet handling

- Robust and durable components for the design of the production line
- Every customer request and requirement can be taken into account
- Full flexibility in the configuration of the printing line
- Optimum adaptation to the customer's requirements



High-performance feeder 780

- Market-proven and widely used feeder
- Specific upgrade packages for aluminum and scroll sheets
- Electronic synchronisation to the printing line
- Robust and durable design including double sheet control and ejection
- Simple operation thanks to local control panels and operator relief tools such as laser assisted pile centering and motorised adjustment of the pile carrier



Infeed frame

- Flat and proven sheet transport for challenging metal sheets
- Special equipment for scroll sheets, aluminum, thick and thin metal sheets
- Easy adjustment of the sheet material to be printed
- Motorised format adjustment in the feed frame
- Precise sheet feeding and extremely simple operation



High-performance printing unit

- The most modern offset printing unit in metal decorating
- Short, fast-reacting printing unit to reduce waste
- Fast achievement of a stable ink/water balance
- All settings and controls can be conveniently operated from the control console
- Highest print quality for high-quality metal packaging



Automatic and parallel roller washing

- Automatic roller washing programmes for easy and thorough cleaning of the ink rollers
- Simple operation from the control station
- Parallel washing of ink rollers during blanket washing with DriveTronic SRW (Simultaneous Roller Washing)
- Reliable and fast cleaning of the rollers

Logistics

- Roller conveyors for pile transport
- Gear driven roller conveyors for pile moving of slippery metal sheets
- Chain conveyor for side loading and unloading of piles for feeder or stacker
- Turntable for the safe rotation of piles



Stacker

- Single stacking
- Double stacking for uninterrupted production or separation of waste sheets
- Triple stacks for uninterrupted production and separation of waste sheets
- Available as magnetic overhead (MagStack) or vacuum overhead version (VacStack)



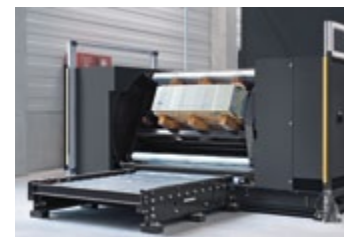
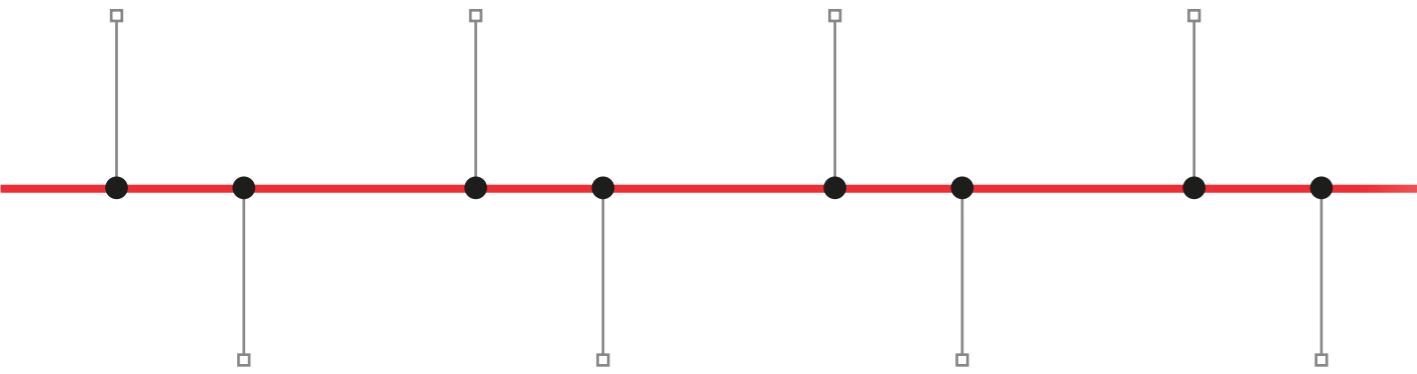
Inline coating

- MetalCoat 470 with 3-roller coating unit
- MetalCoat 480 with anilox coating unit
- MetalCoat 483 with 3-roller coating unit and high automation



Sheet Management System

- Secure sheet removal
- Optionally with sheet reinsertion
- Optionally with waste ejection
- Optionally with sheet reinsertion and waste ejection



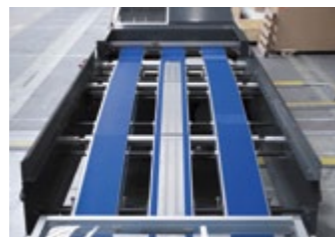
Pile turner

- Inline pile turner for safe and automatic turning of piles



Inspection transport

- Conveyors prepared for the installation of inspection systems



Sheet transport

- Conveyors for bridging heights
- Flow out conveyors for coated sheets



Drying

- UV dryer
- Energy saving LED Drying with MetalCure LED
- Conventional thermal drying oven

A Matching Line for Every Application

As individual as your production. The Mailänder 283 is suitable for a broad spectrum of products and applications. Tailored precisely to your requirements.



Technical Data

Sheet format				
Maximum	1000 x 1200	mm	39.37 x 47.24	inch
Minimum	510 x 710	mm	20.08 x 27.95	inch
Thickness ¹	0.13 – 0.60 for tinplate	mm	0.0051 – 0.0236 for tinplate	inch
	0.18 – 0.50 for aluminium	mm	0.0071 – 0.0197 for aluminium	inch
Sheet material				
	Tinplate and ECCS (TFS) complying with EN 10202			
(optional)	Aluminium complying with EN 541			
Sheet cut				
	Straight			
(optional)	Scroll			
Print format				
Maximum printing area	995 x 1200	mm	39.17 x 47.24	inch
Gripper margin	3	mm	0.1181	inch
Print start	5	mm	0.1969	inch
	from edge of sheet		from edge of sheet	
Plate and blanket dimensions				
Size of printing plate	1095 x 1220 x 0.40	mm	43.11 x 48.03 x 0.0157	inch
Blanket size	1220 x 1275 x 1.95	mm	48.03 x 50.19 x 0.0767	inch
Production speed ²				
	up to 7500 sheets/h		up to 125 spm	
Feeder pile				
Maximum weight	3500	kg	7716.18	lbs
Operating environment				
Electric power supply	3 x 400 V +/-5 %, 50 Hz			
	(optional)	Other voltage and/or frequency on request		
Compressed air	6 bar (constantly applied to conditioning unit)			
Relative humidity	45 – 60 %			
Ambient temperature	Max. 35 °C			
	(optional)	Max. 40 °C with cabinet climate control		
Installation altitude	Max. 1000 m above sea level			
	(optional)	Above 1000 m sea level on request		
Remote maintenance				
	via internet connection			

Professional Services for Your Koenig & Bauer MetalPrint Products

We are at your service! Our experts provide assistance and support to your production lines. All over the world and over the full service life.

<p>Time & productivity gains</p> <p>24/7 Support</p>	<p>Only original</p> <p>Spare Parts</p>	<p>Taylored partnership</p> <p>Service Contracts</p>
<p>Stay up-to-date</p> <p>Upgrades</p>	<p>Preventing unplanned downtime</p> <p>Preventive Maintenance</p>	<p>Optimised production</p> <p>Training & Consulting</p>



¹ Printability is also influenced decisively by the flexural rigidity of the substrate.

² Depending on quality, format and thickness of sheets, inks, etc. as well as drying oven specification.

Koenig & Bauer MetalPrint GmbH

Wernerstr. 119-129
70435 Stuttgart, Germany

T +49 711 699 71-0
F +49 711 699 71-670
info-metalprint@koenig-bauer.com

metalprint.koenig-bauer.com

Any part of the text or images may only be used with the permission of Koenig & Bauer MetalPrint GmbH. Images may depict special configurations that are not included in the basic price of the press. Some of the described features/special options are only available for the Mailänder 283. The manufacturer reserves the right to make technical changes and modifications to the construction.